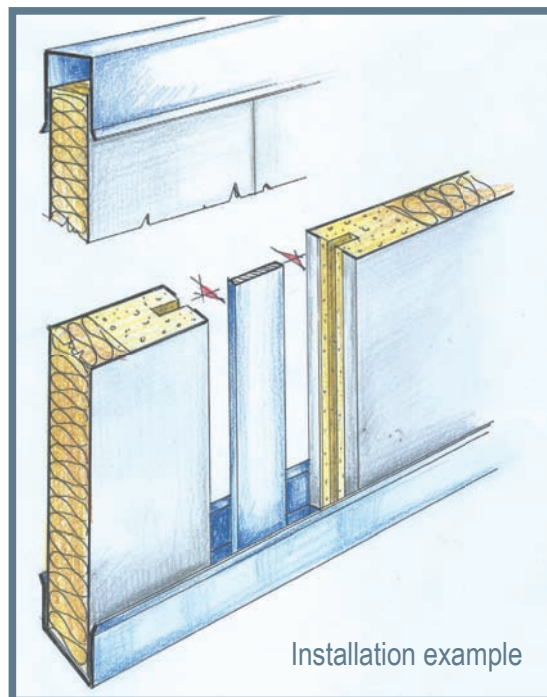


## B15 - 25 mm 32 db CLASS STANDARD PANEL



### TECHNICAL FEATURES

Width	600 mm
Thickness	<b>25 mm</b>
Height	upon request up to 3.000 mm
Weight	Kg. 14/sqm
Sound absorption	<b>32 db</b>
Iso	717/1
Interior material	oriented rock wool

### COVERINGS

Hot dip galvanized sheet 0,7 thick covered with 150 micron PVC film.

Hot dip galvanized sheet 0,7 thick.

Stainless steel sheet 0,7 thick.

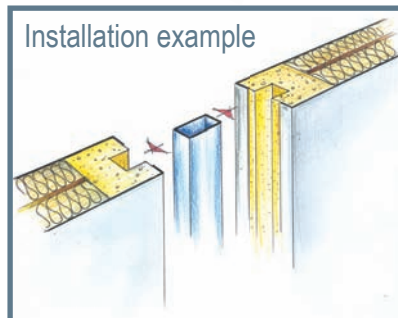
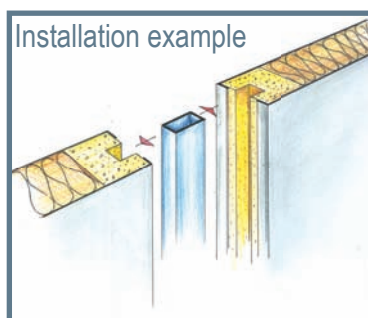
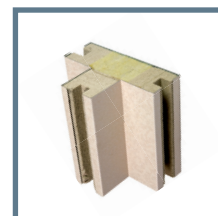
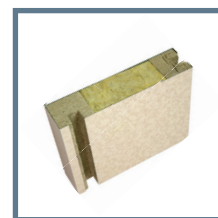
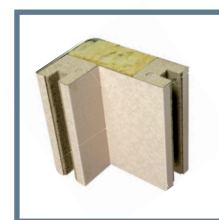
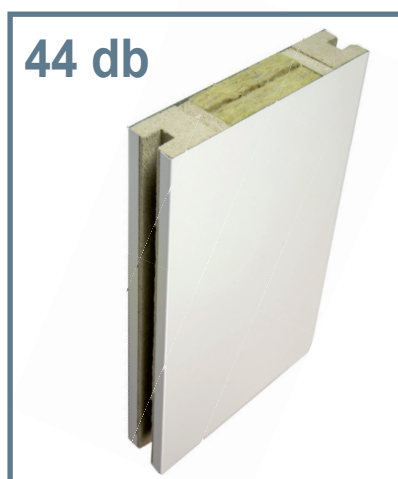
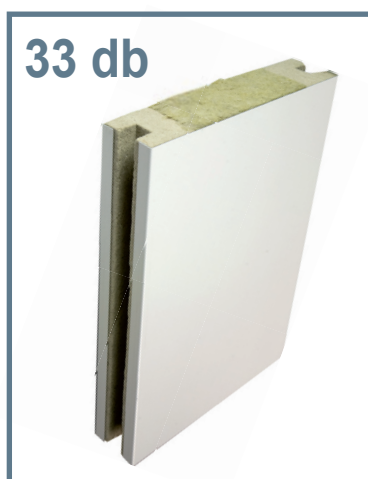
Unrefined aluminium 1,2 thick with 150 micron PVC film.

### SPECIAL PANELS

*In addition to standard panels all kind of special panels, reinforced, bent, edge and corner can be designed and produced.*



## B15 - 50 mm 33 db or 44 db CLASS STANDARD PANEL



### TECHNICAL FEATURES

Width	600 mm
Thickness	<b>50 mm</b>
Height	upon request up to 3.000 mm
Weight	Kg. 18/sqm
Sound absorption	<b>33 db or 44 db</b>
Iso	717/1
Interior material	oriented rock wool

### COVERINGS

Hot dip galvanized sheet 0,7 thick covered with 150 micron PVC film.

Hot dip galvanized sheet 0,7 thick.

Stainless steel sheet 0,7 thick.

Unrefined aluminium 1,2 thick with 150 micron PVC film.

### SPECIAL PANELS

*In addition to standard panels all kind of special panels, reinforced, bent, edge and corner can be designed and produced.*



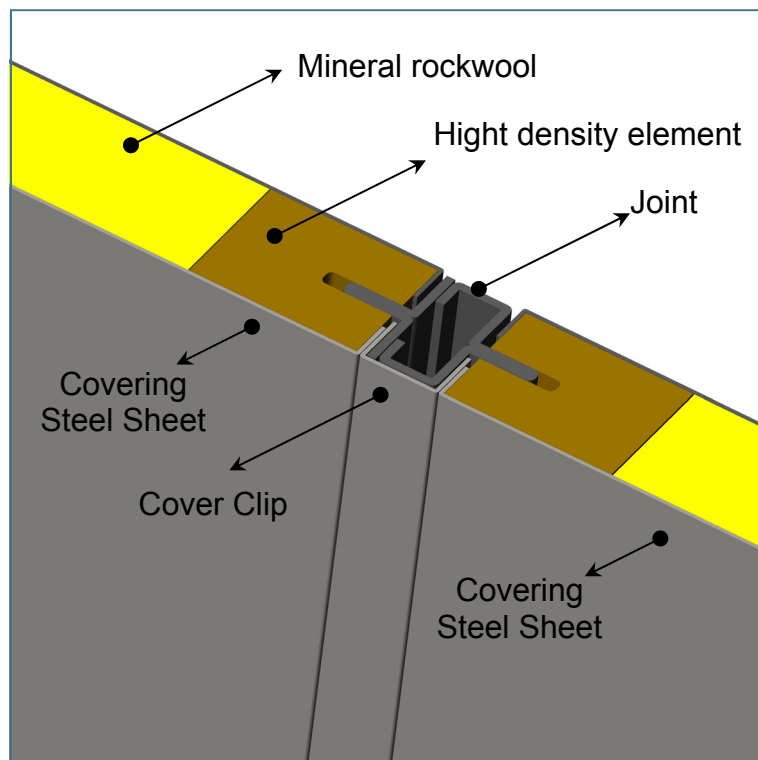
# QUICK REMOVABLE WALL PANEL

## (25 MM THICKNESS)

### "C" RATED CLASS

#### Features

- **quick dismantling of any single panel without any special tool.**
- **cover clip profile : 14 mm wide.**
- **Purpose for bulkhead lining**
- **Standard height : 2200 mm**
- **For use with standard mounting profiles (upper & lower profile)**



#### TECHNICAL FEATURES

Width	600 mm
Thickness	<b>25 mm</b>
Height	upon request up to 3.000 mm
Weight	Kg. 14 / mq
Sound absorption	<b>32 db</b>
Iso	717/1
Interior material	oriented rock wool

#### COVERINGS

Hot dip galvanized sheet 0,7 thick covered with 150 micron PVC film.

Hot dip galvanized sheet 0,7 thick.

Stainless steel sheet 0,7 thick.

Unrefined aluminium 1,2 thick with 150 micron PVC film.

#### SPECIAL PANELS

*In addition to standard panels all kind of special panels, reinforced, bent, edge and corner can be designed and produced.*



# PROFILI

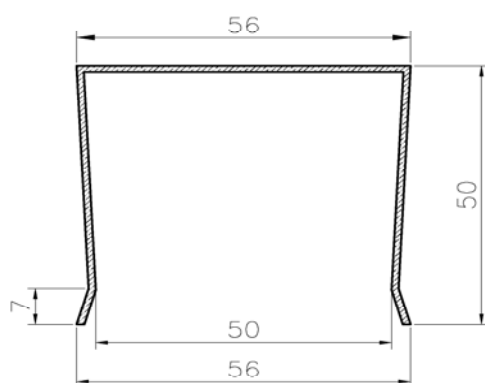


Certificato N° 8405/03/5

## PROFILI DI MONTAGGIO

Pannelli Spessore 50 mm

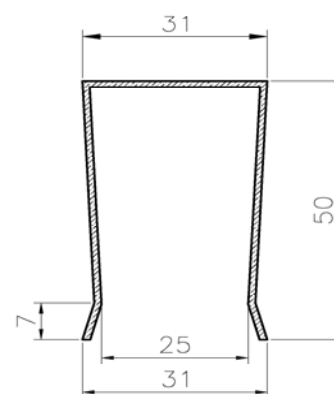
Architrave Superiore



PRF1

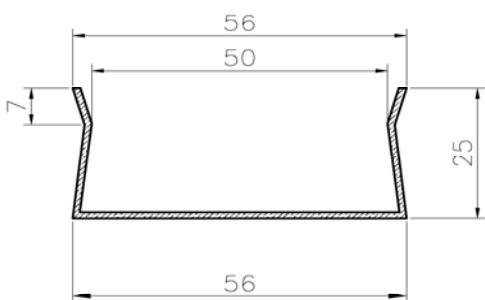
Pannelli Spessore 25 mm

Architrave Superiore



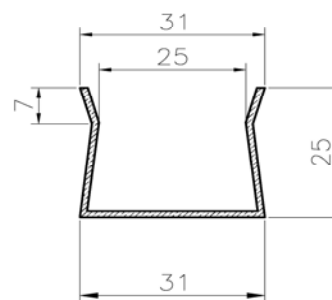
PRF1b

Canalina di Base



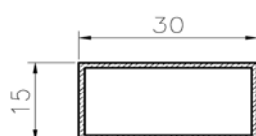
PRF2

Canalina di Base



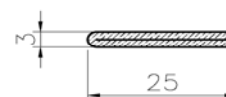
PRF2b

Giunto a scomparsa



PRF3

Giunto a scomparsa



PRF3b

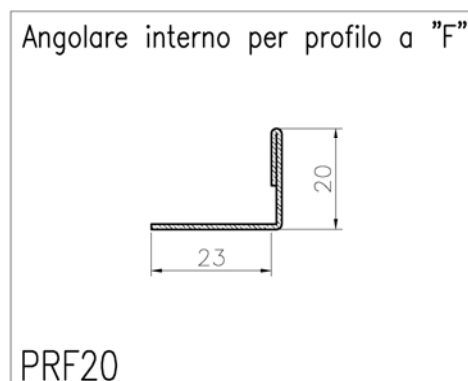
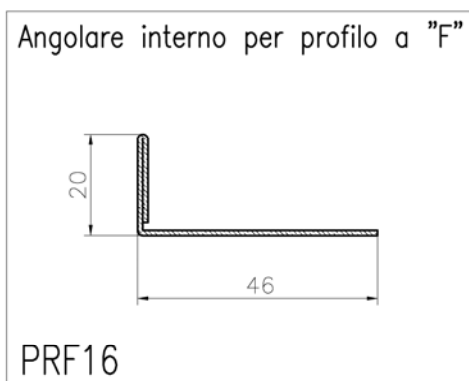
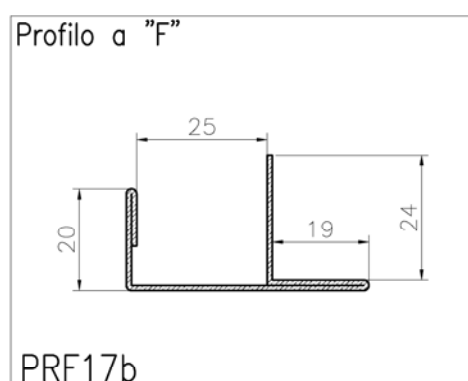
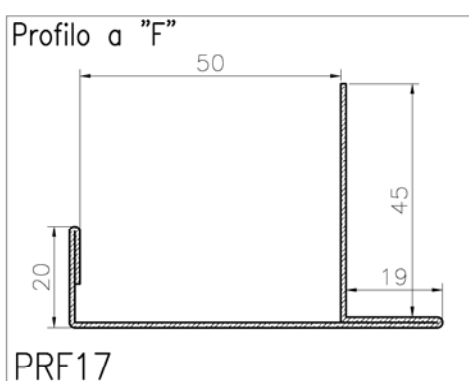
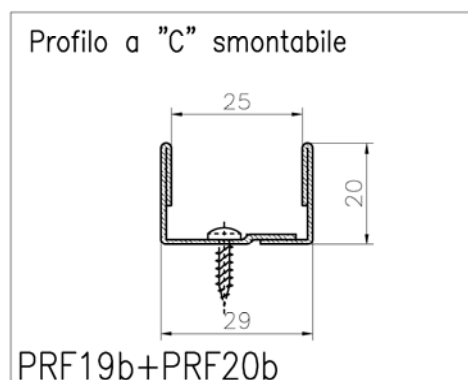
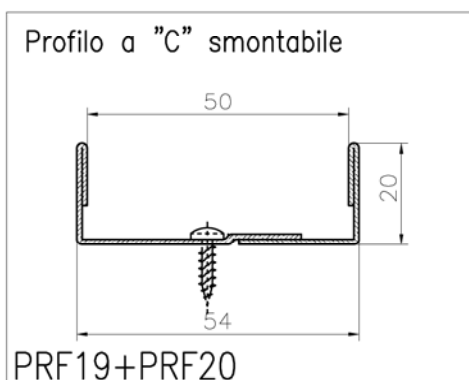
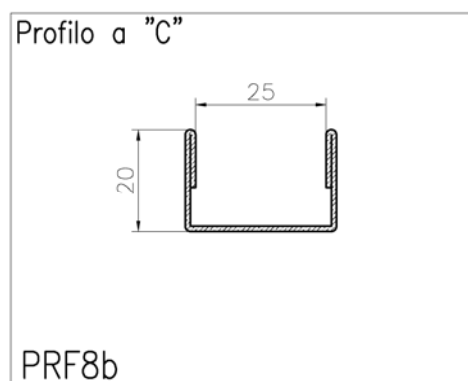
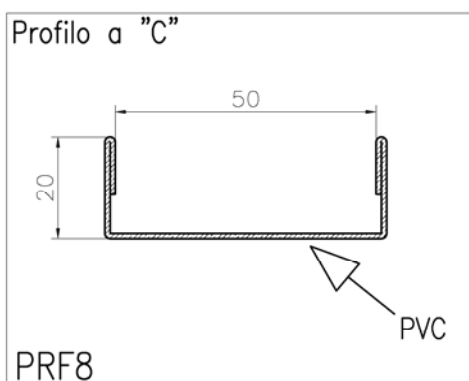


# PROFILI



Certificato N° 8405/03/5

## PROFILI DI GIUNZIONE / RIFINITURA





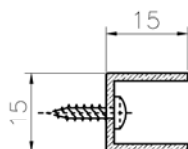
# PROFILI



Certificato N° 8405/03/5

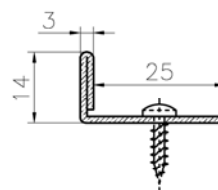
## PROFILI DI GIUNZIONE / RIFINITURA

Mezza Anima per pannelli da 50 mm



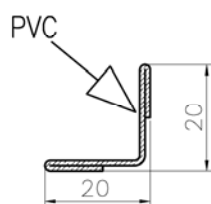
PRF4

Mezza Anima per pannelli da 25 mm



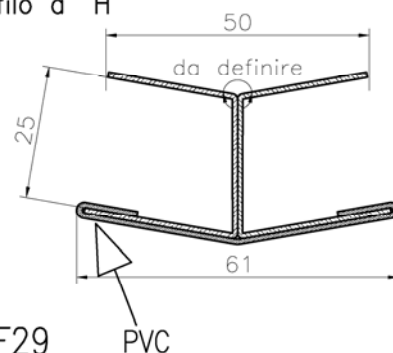
PRF4b

Profilo a "L"



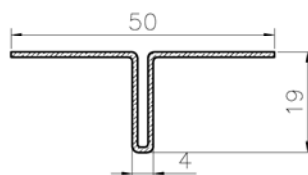
PRF9

Profilo a "H"



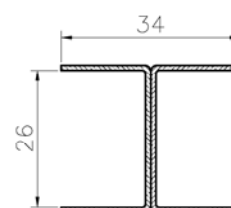
PRF29

Per pannelli da 50mm (44 dB)



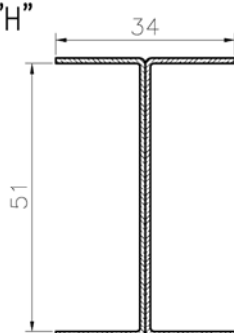
PRF14

Profilo a "H"



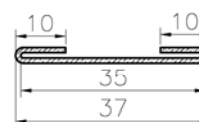
PRF42

Profilo a "H"



PRF36

Per PRF42 e PRF 36



PRF35





# FALSE CEILING STAVES

## C rated class 300GS-A



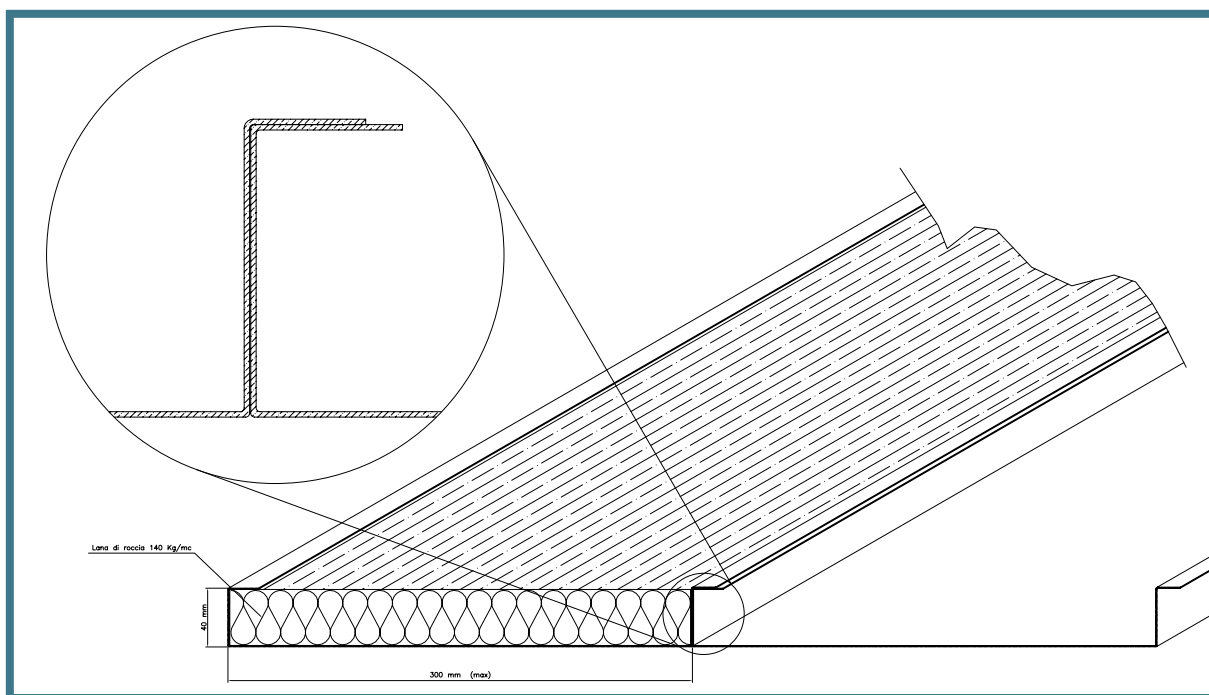
Certificato N° 8405/03/5

**STAVES FOR C RATED CLASS FALSE CEILING MADE OF BENDED STEEL FOIL AND ROCK-WOOL (DENSITY 140 KG/MC)**

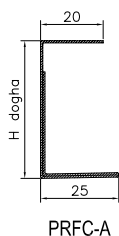
### AVAILABLE SURFACE FINISHING:

- **PVC PRE-COATED GALVANIZED STEEL FOILS (ACCORDING TO LAMPRE COLOR SERIE)**
- **GALVANIZED AND VARNISHED STEEL FOILS (ACCORDING TO RAL COLOR SERIE)**
- **PREVARNISHED ALUMINIUM FOILS, RAW OR ANODIZED.**

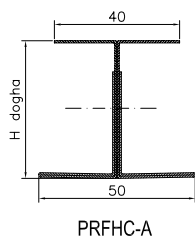
**NARROW JOINT SHAPE (LOOK AT THE DETAIL IN THE DRAWING BELOW).**  
**STAVES MAX. LENGHT: 2500 MM. WIDTH 300 MM (MAX).**



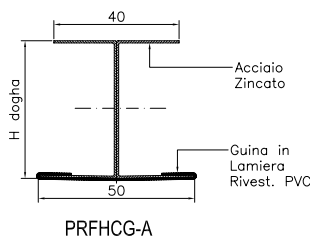
Profilo perimetrale a "C"



Profilo rompitratta a "H"



Profilo rompitratta a "H"



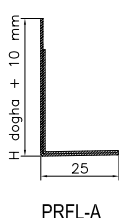
300GS-A  
PRFC-A  
PRFHC-A  
PRFHCG-A

STAVE DIMENSIONS W300xL2500 MM (MAX.)

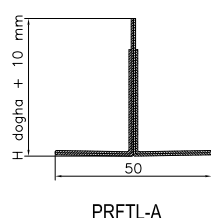
PERIMETER SUPPORT SHAPE TYPE "C"  
INTERMEDIATE SUPPORT SHAPE TYPE "H"  
INTERMEDIATE SUPPORT SHAPE TYPE "H" WITH PVC SHEATH  
PERIMETER SUPPORT SHAPE TYPE "L"  
INTERMEDIATE SUPPORT SHAPE TYPE "T"  
INTERMEDIATE SUPPORT SHAPE TYPE "T" WITH PVC SHEATH

PRFL-A  
PRFTL-A  
PRFTLG-A

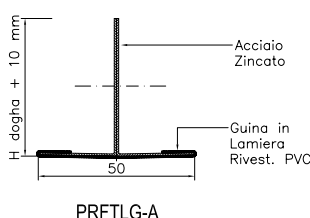
Profilo perimetrale a "L"



Profilo rompitratta a "T"



Profilo rompitratta a "T"





Certificato N° 8405/03/5



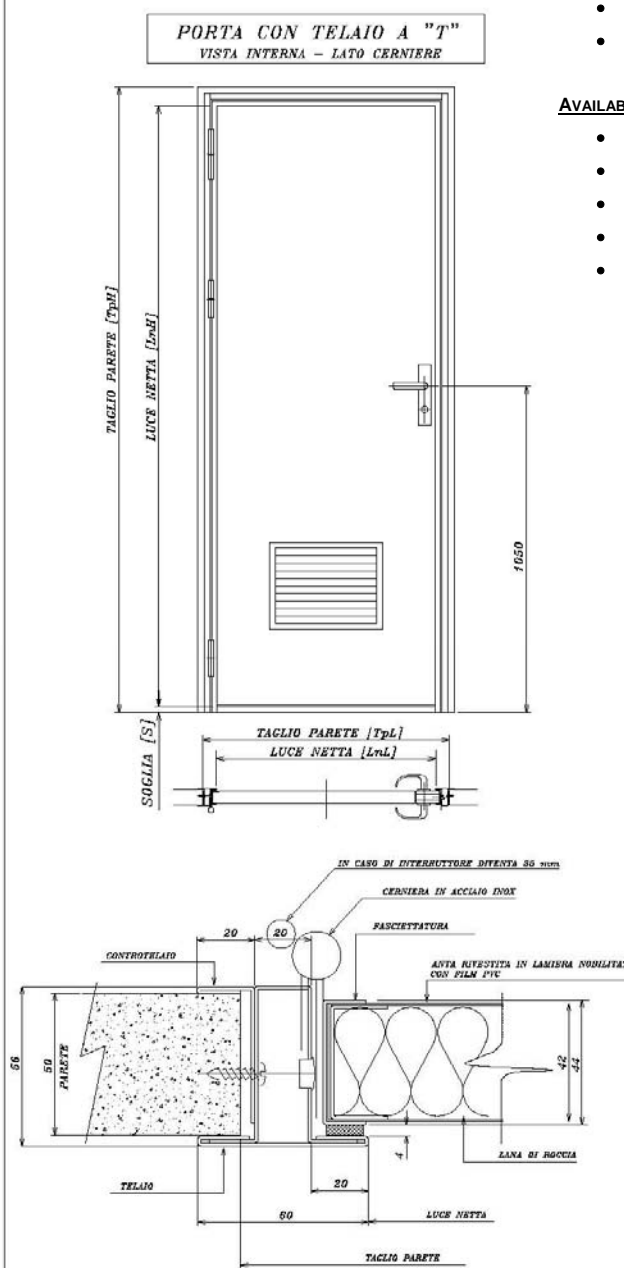
# "B15" RATED CLASS DOORS

## AVAILABLE B15 RATED CLASS TYPES :

- SINGLE LEAF HINGED DOORS
- SINGLE LEAF SLIDING DOORS
- DOUBLE LEAF HINGED DOORS
- DOUBLE LEAF HINGED DOORS

## AVAILABLE OPTIONS :

- PORTHOLE
- RECTANGULAR WINDOW
- VENTILATION GRID
- PEEPHOLE
- KICK PLATE



- FRAME STANDARD SECTIONS "T" AND "Z". CUSTOMIZED SHAPES AVAILABLE.
- FRAME FINISHING: STAINLESS STEEL, VARNISHED STEEL (RAL o NCS)
- 3 OR 4 STAINLESS STEEL HINGES (ONE WITH SPRING)
- SANDWICH TYPE LEAF MADE OF GALVANIZED STEEL AND ROCK WOOL (150 KG/MC)  
LEAF FINISHING: PVC PRE-COATED FOIL OR GALVANIZED STEEL + PLASTIC FOIL.
- LEAF PERIMETER BAND WITH THE SAME FINISHING OF DOOR FRAME.  
LEAF THICKNESS: 42MM
- SUITABLE FOR ANY TYPE OF LOCK

THE PICTURES ARE FOR SALE PURPOSE ONLY.  
THE COMPANY IS ALLOWED TO CHANGE THE PRODUCT FEATURES WITHOUT ANY COMMUNICATION.

**Alcinav S.p.A.**

Via della Repubblica, 45/A - 54011 - Albiano Magra - Aulla (MS) - Tel.: +39 0187 415455 - FAX: +39 0187 415750  
www.alcinav.it - info@alcinav.it  
P.IVA 01207360452 - R.E.A. 121784 - C.S.: 500.000,00 i.v.





Certificato N° 8405/03/5

# "C" RATED CLASS DOORS



## TYPES :

- SINGLE LEAF HINGED DOORS
- DOUBLE LEAF HINGED DOORS
- SINGLE LEAF SLIDING DOORS
- DOUBLE LEAF SLIDING DOORS
- LIGHT ALLOY MADE DOORS
- WITH EMERGENCY DOOR HANDLE



## OPTIONALS :

- PORTHOLE
- RECTANGULAR WINDOW
- VENTILATION GRID
- PEEPHOLE
- KICK PLATE



# INSPECTION HATCH (SERVICE DOOR) B15 Rated class



Certificato N° 8405/03/5

- FRAME AND COUNTERFRAME MADE BY GALVANIZED STEEL 1.2 MM THICKNESS.
- LEAF 25 MM THICKNESS MADE BY STEEL & ROCKWOOL SANDWICH. ON VIEW SIDE WITH PRECOATED PVC STEEL SHEET (LAMPRE, GISLAVED, ETC). OTHER SIDE ON ROUGH GALVANIZED STEEL.

- 3 POINT LOCKING DEVICE WITH FOLLOWING OPTIONS :

- WITH SQUARE KEY 7x7 MM
- WITH FLAT HANDLE
- WITH HANGING RING

- - STAINLESS STEEL METRIC HINGE

- - MAX DIMENSIONS : Clear Opening 650x1810 mm



**INTERNAL VIEW**

**SQUARE KEY 7x7 MM**



**FLAT HANDLE**



**HANGING RING**



**EXTERNAL VIEW**



Certificato N° 8405/03/5

## PORTHOLE FINISHING

### TYPE A

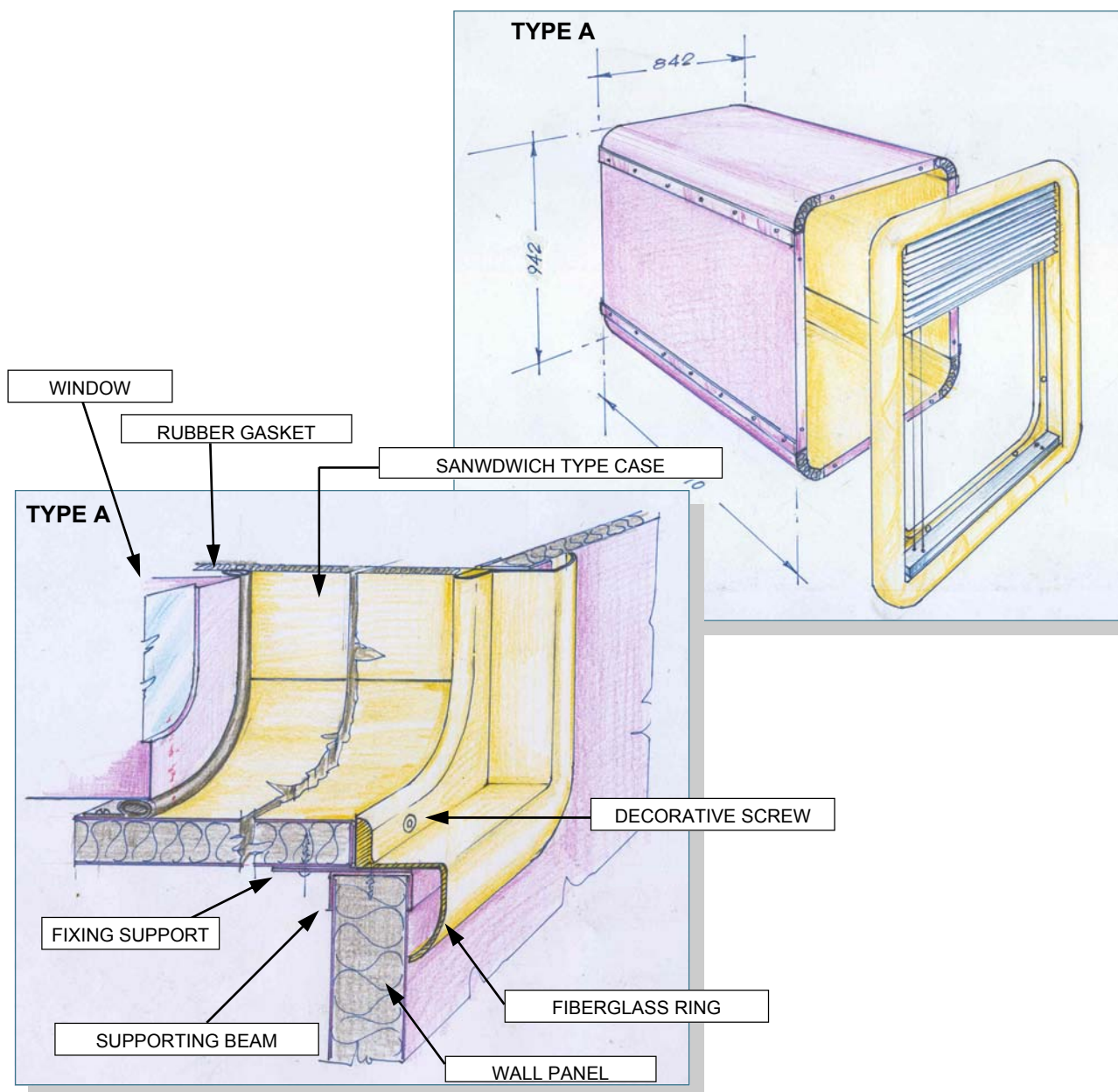
CASE : Made of sandwich panels PVC pre-coated galvanized steel foils and rock wool. It can be assembled in workshop or on site (on board)

RING : Made of fiberglass. Curtains included. Fixed by four decorative screws

### TYPE B

CASE : Made of powder varnished galvanized steel foils. Caulked.

RING : Made of powder varnished galvanized steel foils





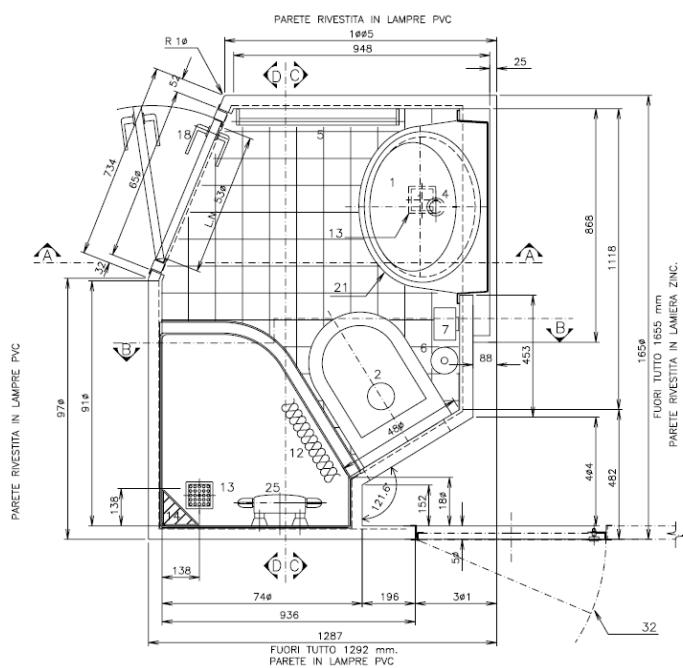


Certificato N° 8405/03/5

# WET UNIT "LIVORNO"

EXTERNAL DIMENSIONS : 1650X1287MM

AVAILABLE IN PREFABRICATED REALIZATION OR IN ASSEMBLY KIT (FOR REFITTING)



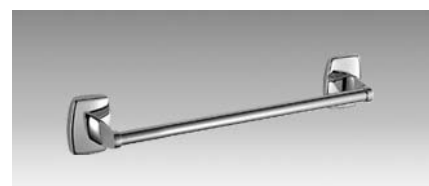
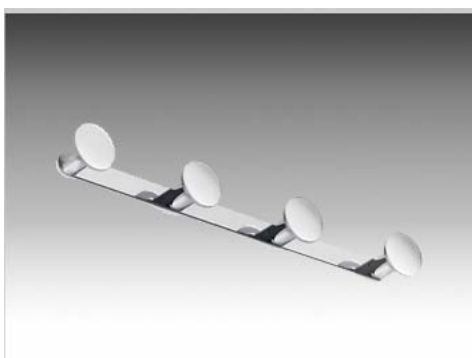
## MATERIAL & ACCESSORIES

- Wall by sandwich panels double side (cabin—corridor) PVC film coated (color to be defined).
- Basement in galvanized steel 2 or 3 mm thickness.
- Flooring by 100x100 mm tiles (antislip)
- Drain by Polypropylene dia. 50/32 mm complete with nr 2 inox catch basin
- Mineral rockwool oriented fiber 150 kg/mc density.
- Door finiture PVC (color to be defined) with stainless steel frame, lock R&C complete with opening limiter.
- Electrical switch B-Ticino 5011 Bipolar MAGIC series
- Washbasin VTR module (see technical chart attached)
- Shower Tray in VTR RINA rated class
- Shower mixer Paffoni EQS168CR
- Shower head Grohe Tempesta art. 28591
- Shower curtain in Nylon complete with aluminium rail
- Connection Zucchetti Z9380P — 1/2"
- Vacuum bracker valve 1/2"
- Power socket complete with transformer 220/110 V
- Air extractor TROX (Client supply)
- Nr. 2 Towel holder 600/400 mm INDA 2200
- Wall mounted toilet brush INDA 3814
- Toilet paper holder INDA 2226
- Toilet paper holder spare INDA 2228
- Nr. 2 Safety grab bar INDA 590/M
- Nr. 2 Clothes hanger INDA 1225/4/CM
- Soap dish INDA 04490
- H2O system (hot & cold) made by copper insulated with Armaflex
- Electrical system complete with final point in junction box on inspection area



Certificato N° 8405/03/5

## ACCESSORIES & COMPONENTS



THE PICTURES ARE FOR SALE PURPOSE ONLY. THE COMPANY IS ALLOWED TO CHANGE THE PRODUCT FEATURES WITHOUT ANY COMMUNICATION.

**Alcinav S.p.A.**

Via della Repubblica, 45/A - 54011 - Albiano Magra - Aulla (MS) - Tel.: +39 0187 415455 - FAX: +39 0187 415750

www.alcinav.it - info@alcinav.it

P.IVA 01207360452 - R.E.A. 121784 - C.S.: 500.000,00 i.v.



# Icinav

## FIBERGLASS WASHBASIN



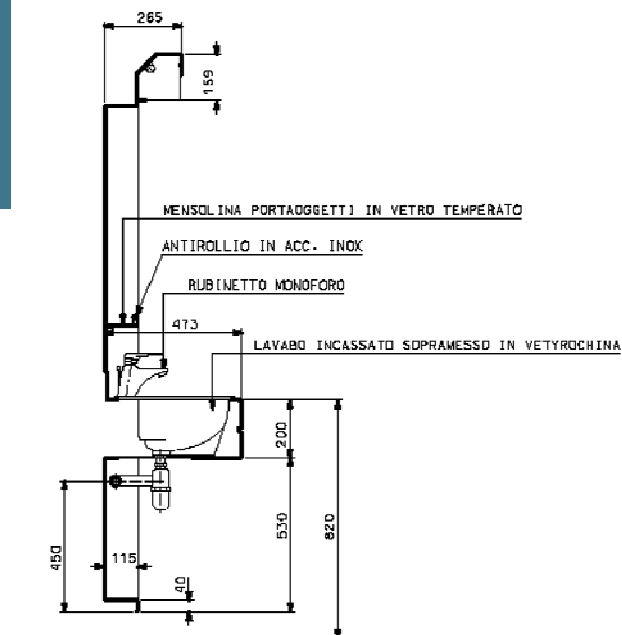
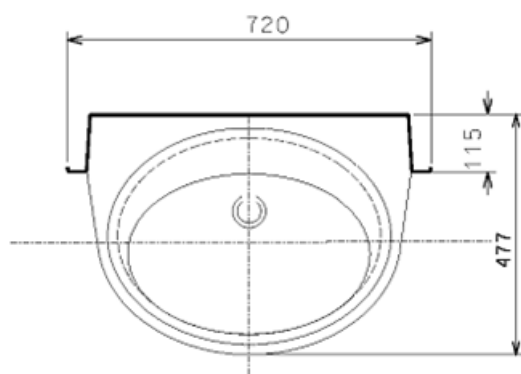
Certificato N° 8405/03/5

MADE OF R.I.N.A. CERTIFIED FIBERGLASS

OVERALL DIMENSIONS: WIDTH 720- THICKNESS 115/477- HEIGHT 1930 MM

### ACCESSORIES

- ◆ FIBERGLASS STRUCTURE
- ◆ MIXER brand PAFFONI type NT 075
- ◆ EMBEDDED WASHBASIN brand POZZI GINORI type ONTARIO
- ◆ CHROMED BRASS SIPHON brand GHIDINI)1/14
- ◆ CHROMED BRASS TUBE Ø 32 mm L. 80 mm
- ◆ PLASTIC SOAP DISH brand INDA type 2211
- ◆ PLASTIC GLASS HOLDER brand INDA type 2210 (Nr. 2 )
- ◆ EMBEDDED POWER SOCHET WITH TRASFORMER 220/110 V brand B-TICINO MAGIC type 5460 X
- ◆ ANTI-MILDEW MIRROR Dim. 620x880xt 6 mm
- ◆ GLASS MADE SHELF (Th. 6 mm)
- ◆ STAINLESS STEEL ANTI-ROL BAR
- ◆ LAMP brand TECNodelta power 30 W
- ◆ LAMP SWITCH



Alcinav S.p.A.

Via della Repubblica, 45/A - 54011 - Albiano Magra - Aulla (MS) - Tel.: +39 0187 415455 - FAX: +39 0187 415750  
www.alcinav.it - info@alcinav.it  
PIVA 01207360452 - R.E.A. 121784 - C.S.: 500.000,00 i.v.



## PRE-MANUFACTURED FIBERGLASS SHOWER STALL



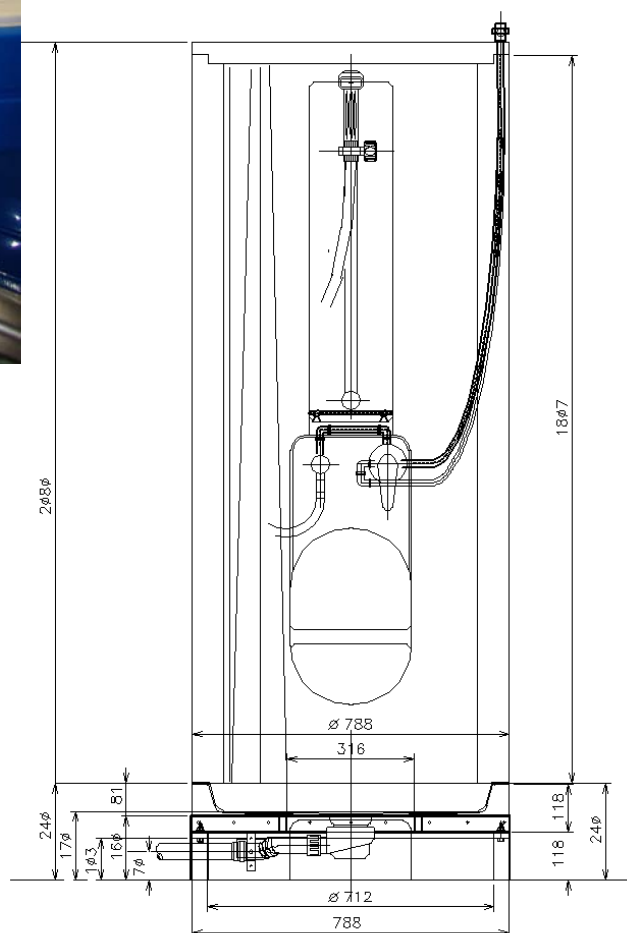
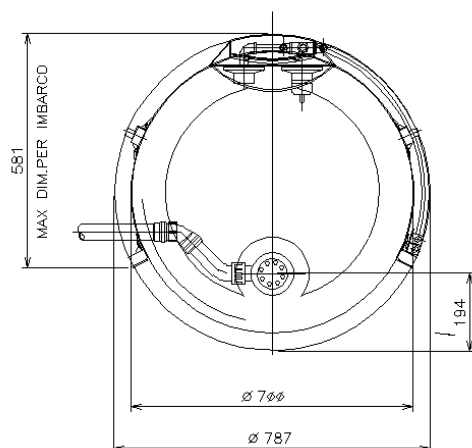
Certificato N° 8405/03/5

MADE OF R.I.N.A. CERTIFIED FIBERGLASS

OVERALL DIMENSIONS: DIAMETER 787 MM— HEIGHT 2080 MM

### ACCESSORIES

- ◆ SHOWER MIXER brand PAFFONI type NT 010
- ◆ ADAPTOR brand ZUCCHETTI type Z9380P
- ◆ VACUUM BREAKER
- ◆ SHOWER HEAD brand GROHE type TEMPESTA ART. 28591
- ◆ STAINLESS STEEL ANTI-ROLL BAR Ø 6 mm
- ◆ NYLON CURTAIN (height mm 1840)
- ◆ CURTAIN POLE type SILENT GLISS 6100 SV. 1100 mm
- ◆ PVC OUDORLESS SIPHON Ø 40/50 mm
- ◆ GALVANIZED STEEL BASE
- ◆ STAINLESS STEEL FRONT BASE
- ◆ ANTI-SLIP FLOOR
- ◆ INSULATED COPPER MADE WATER ADDUCTION SYSTEM (hot & cold) Ø 15 mm
- ◆ VALVOLE TERMINALI Ø 1/2" FEMMINA
- ◆ SHOWER BLOWPIPE WITH UP-DOWN SYSTEM



THE PICTURES ARE FOR SALE PURPOSE ONLY.  
THE COMPANY IS ALLOWED TO CHANGE THE PRODUCT FEATURES WITHOUT ANY COMMUNICATION.



# PRE-MANUFACTURED FIBERGLASS WC MODULE



Certificato N° 8405/03/5

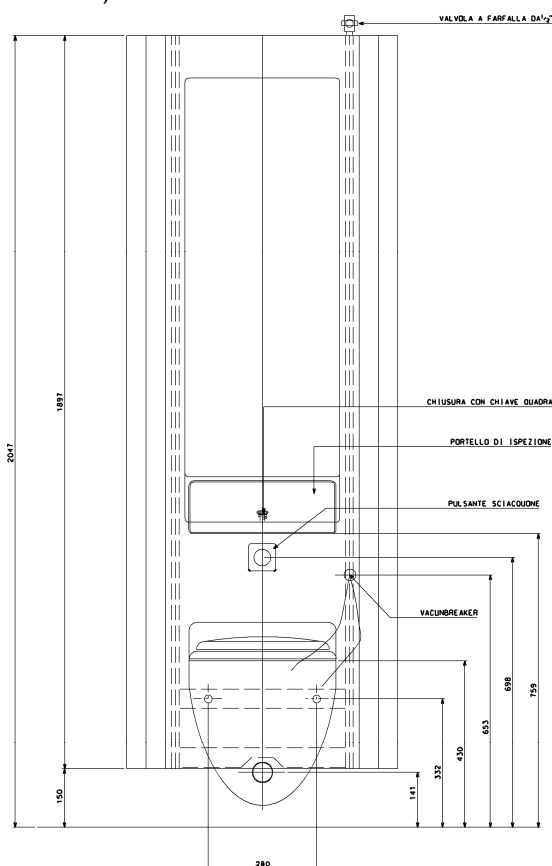
MADE OF R.I.N.A. CERTIFIED FIBERGLASS  
OVERALL DIMENSIONS: W. 700x T. 200 x H.=2047 MM

## FEATURES

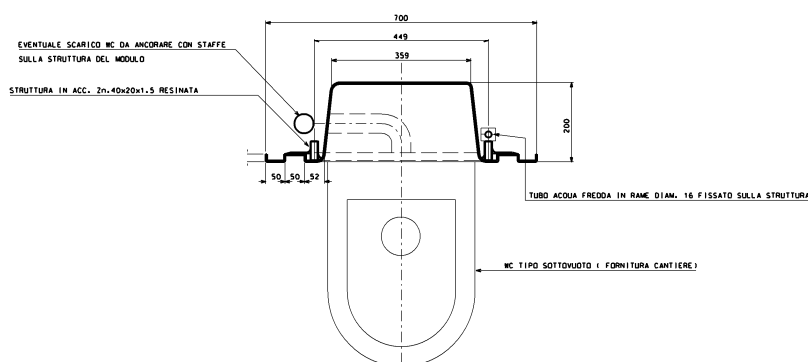
- ◆ INSPECTION HATCH
- ◆ COPPER MADE WATER ADDUCTION SYSTEM - Tube Ø 15 mm + 1/2" VALVE
- ◆ MODULE SUITABLE FOR WC OR BIDET
- ◆ MODULE SUITABLE FOR VACUUM SEALED SYSTEM ONLY.

## OPTIONALS

- ◆ ANTI-ROLL SHELVES (On demand)
- ◆ WC (Not included).



PIANTA







Certificato N° 8405/03/5

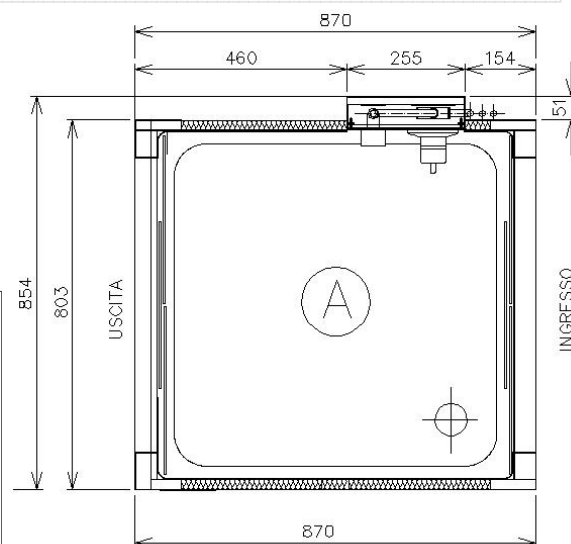
# DECONTAMINATION SHOWER UNIT

MADE OF STAINLESS STEEL AND ROCK WOOL PANELS  
BASE MADE OF GALVANIZED STEEL. SHOWER TRAY MADE OF STAINLESS STEEL  
OVERALL DIMENSION: 854X870X H2060 MM

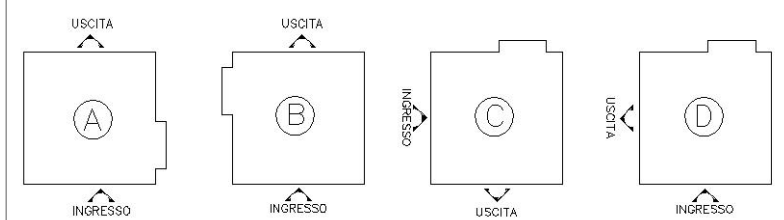


## FEATURES

- PANELS SANDWICH TYPE, STAINLESS STEEL—ROCK WOOL
- SUPPORT STRUCTURE MADE OF GALVANIZED STEEL TUBE 30x15x1.5 mm
- STAINLESS STEEL SHOWER TRAY 800x800 mm
- PVC DRAIN TUBE brand GHIDINI type 368 D.80
- TRASPARENT PVC CURTAIN thickness: 3 mm
- MIXER brand PAFFONI type NT 015
- SHOWER SYSTEM brand GROHE, type TEMPESTA 28591
- CONNECTOR brand ZUCCHETTI type Z9380P
- VACUUM BREAKER
- SHOWER NOZZLE DA 1/2" DIAM 90 ART,28400 CR
- LIQUID SOAP DISPENSER 1 lt. Brand INDA type 567
- HOOK FOR MASK AND BRUSH brand INDA type 562 CR
- SOAP DISH brand INDA type 041
- COPPER TUBES COMPLETE WITH 1/2" GAS VALVES (F)
- BASE SUPPORTS FOR DECK WELDING



## AVAILABLE CONFIGURATIONS



Alcinav S.p.A.

Via della Repubblica, 45/A - 54011 - Albiano Magra - Aulla (MS) - Tel.: +39 0187 415455 - FAX: +39 0187 415750  
www.alcinav.it - info@alcinav.it  
P.IVA 01207360452 - R.E.A. 121784 - C.S.: 500.000,00 i.v.



Certificato N° 8405/03/5

## BUNK BED

MADE OF SANDWICH PANELS ALUMINIUM - ROCK WOOL. FRAME MADE OF ALUMINIUM TUBES.

OVERALL DIMENSION: 800x2000xH 2050 MM



THE PICTURES ARE FOR SALE PURPOSE ONLY. THE COMPANY IS ALLOWED TO CHANGE THE PRODUCT FEATURES WITHOUT ANY COMMUNICATION.

**Alcinav S.p.A.**

Via della Repubblica, 45/A - 54011 - Albano Magra - Aulla (MS) - Tel.: +39 0187 415455 - FAX: +39 0187 415750

[www.alcinav.it](http://www.alcinav.it) - [info@alcinav.it](mailto:info@alcinav.it)

P.IVA 01207360452 - R.E.A. 121784 - C.S.: 500.000,00 i.v.





# HONEYCOMB ALUMINIUM BUNK BED

(800x2000xH1950 mm)



Certificato N° 8405/03/5

## TECHNICAL FEATURES

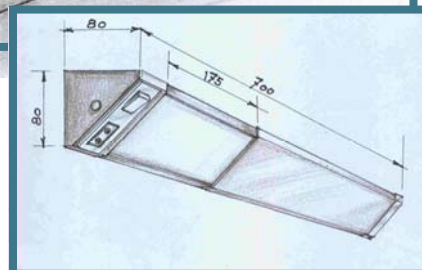
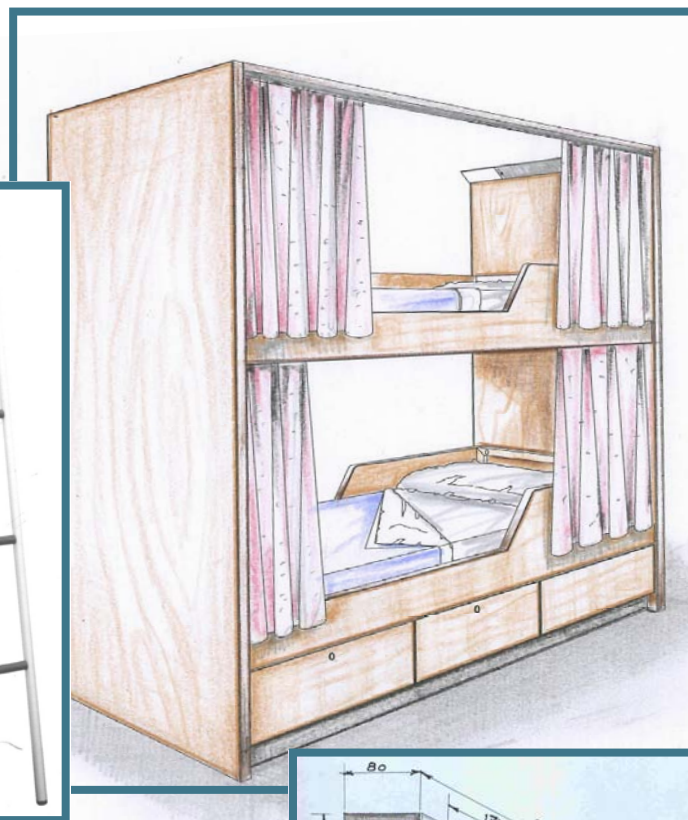
- BED FRAMES MADE OF POWDER COATED GALVANIZED STEEL TUBES th. 8/10 mm
- DRAWERS FRAME MADE OF POWDER COATED ALUMINIUM STEEL TUBES
- HONEYCOMB ALUMINIUM PANELS th. 20 mm, COATED WITH PLASTIC HIGH PRESSURE LAMINATES AND HEMED WITH PVC PROFILE
- DRAWERS MADE OF VARNISHED BENDED GALVANIZED STEEL FOILS 8/10 mm, MAGNET FOR DRAWER LOCKING.

## ACCESSORIES

- VARNISHED GALVANIZED STEEL BED FRAME AND WOODEN BED STEAVES
- FIRE-RESISTANT MATTRESS H. 140 mm
- FIRE-RESISTANT CURTAINS AND ALUMINIUM CURTAIN POLE
- VARNISHED GALVANIZED STEEL LAMP (FEEDING SOCKET IN OPTION)
- MOVABLE LADDER



MOVABLE LADDER



LAMP



Certificato N° 8405/03/5

## SINGLE LEAF WARDROBE

MADE OF SANDWICH TYPE PANELS ALUMINIUM—ROCK WOOL.  
OVERALL DIMENSION : W. 600— T. 600—H. 2000 MM

### ***Detail: HANDLES***



### **FEATURES**

- FRAME MADE OF ALUMINIUM TUBE 50x20x1.5 mm
- LEAVES and SIDES MADE OF SANDWICH TYPE PANELS:  
VARNISHED ALUMINIUM FOILS  
ORIENTED ROCK WOOL, density 100 Kg/m3, th. 20 mm  
GLUE brand SOKEM type ORBI POLYMER
- FINISHING ALUMINIUM PROFILE
- ALUMINIUM DRAWER

### ***Details: LEAF and SIDE***



### ***Detail: DRAWER***



THE PICTURES ARE FOR SALE PURPOSE ONLY. THE COMPANY IS ALLOWED TO CHANGE THE PRODUCT FEATURES WITHOUT ANY COMMUNICATION.



Certificato N° 8405/03/5

# HONEYCOMB SINGLE LEAF WARDROBE

Available overall DIMENSION:  
600x600xH1950 mm | 450x600xH1950 mm



## FEATURES

- STRUCTURE, SIDES AND LEAF MADE OF ALUMINIUM HONEYCOMB PANELS th. 20mm. THE PANELS ARE HIGH PRESSURE LAMINATE COATED AND FINISHED BY MEANS OF PVC PROFILES
- BACKSIDE, FLOOR, SHELVES AND DRAWER MADE OF VARNISHED STEEL FOILS th. 8/10 mm.
- SELF-CLOSING DRAWERS WITH MAGNETIC BLOCK

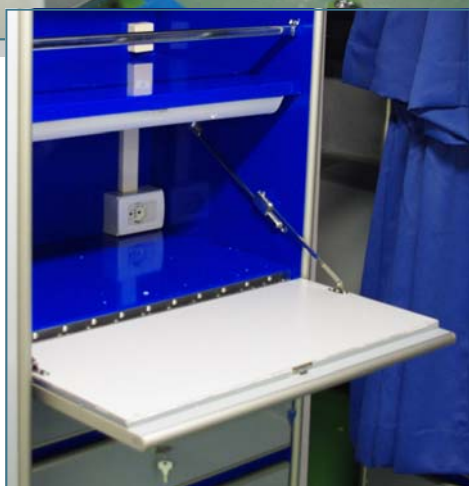
## STANDARD ACCESSORIES

- LOCKS FOR DOORS AND DRAWERS, FOLDING KEYS
- EMBEDDED GLAZED STEEL HANDLES
- CHROMED STEEL HINGES, ANTI-ROLL TUBE FOR LIFE JACKET COMPARTMENT
- MIRROR (ON DEMAND)

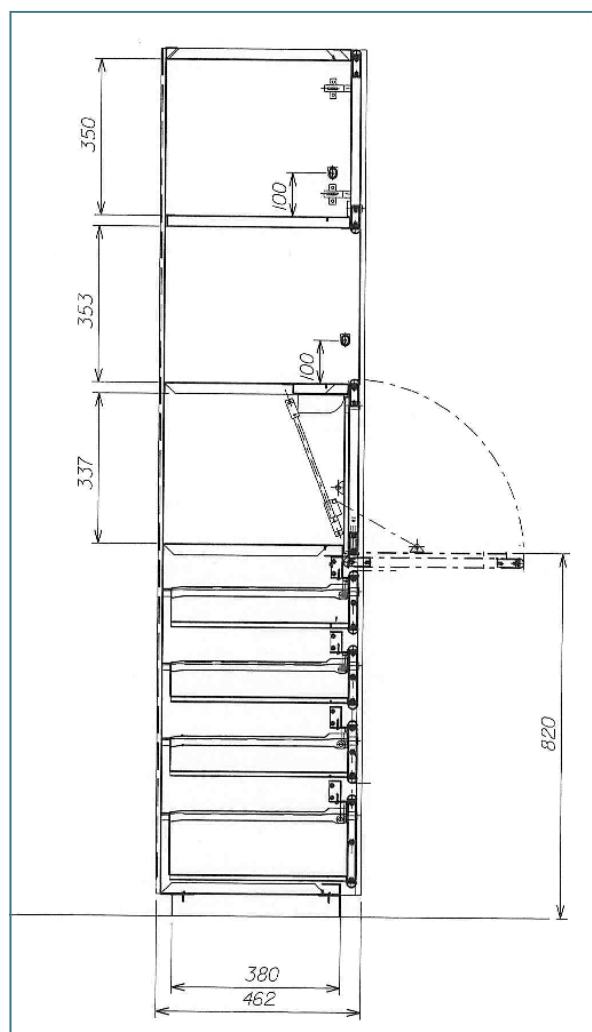




MADE OF SANDWICH PANELS ALUMINIUM/GALVANIZED STEEL - ROCK WOOL  
OVERALL DIMENSIONS [MM] : W. 750- T. 462- H.1950



- FRAME MADE OF ALUMINIUM TUBE DI 50x20x1.5 mm
- SIDES MADE OF SANDWICH PANELS ALUMINIUM (OR STEEL) - ROCK WOOL
- FINISHING ALUMINIUM PROFILES
- ALUMINIUM DRAWERS
- LOCKS WITH FOLDING KEYS
- ALUMINIUM WRITING DESK





Certificato N° 8405/03/5

## COUCH WITH PULLMAN BED

MADE OF ALUMINIUM—ROCK WOOL SANDWICH TYPE PANELS, ALUMINIUM TUBES FRAME, UPHOLSTERED WITH FIRE PROOF TEXTILE, BRAND TREVIRA.  
OVERALL DIMENSION: 2074x 844x H.1950 MM.



### FEATURES

- FRAME MADE OF ALUMINIUM TUBES AND STEEL TUBES
- SIDES MADE OF ALUMINIUM - ROCK WOOL SANDWICH TYPES PANELS
- BEDS OVERTURNING SYSTEM
- BEDS FIXING LOCKS
- ALUMINIUM STEPLADDER (brand R&C)
- LOCKABLE DRAWERS WITH FOLDING KEYS
- PADDING and UPHOLSTERING.
- FIREPROOF MATTRESS dim. 140x 750x 1880 mm







Certificato N° 8405/03/5

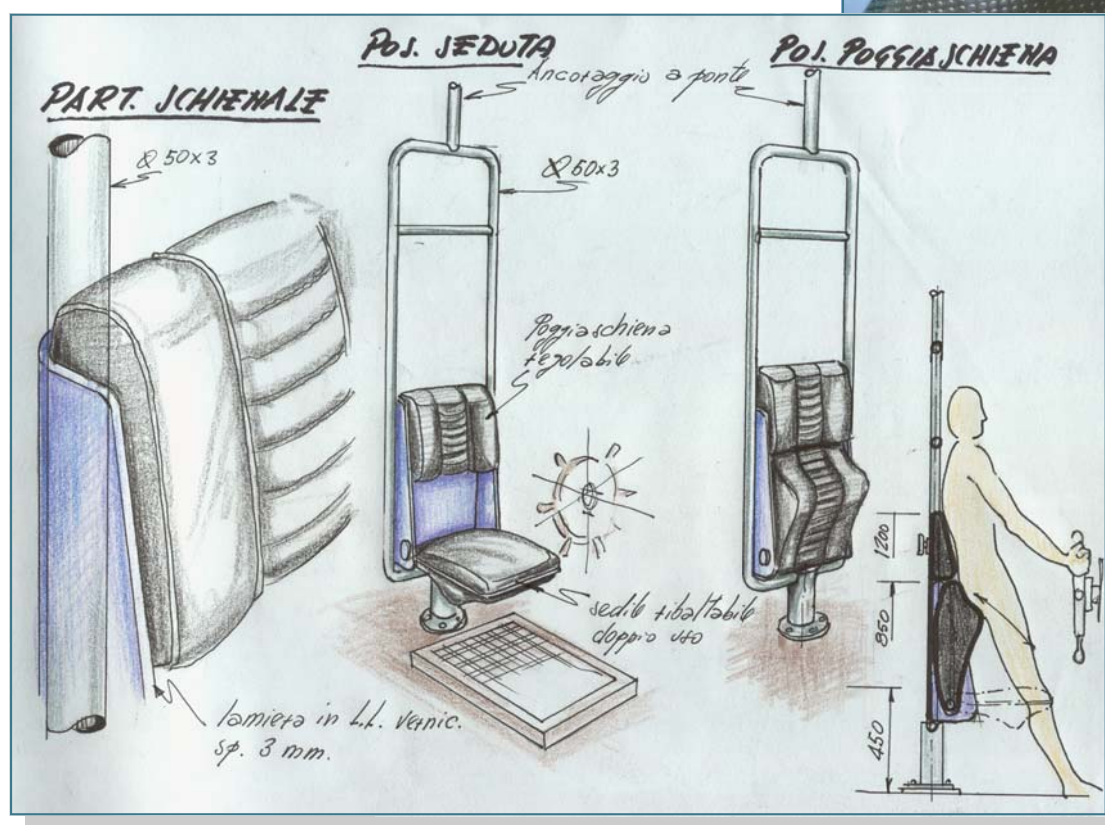
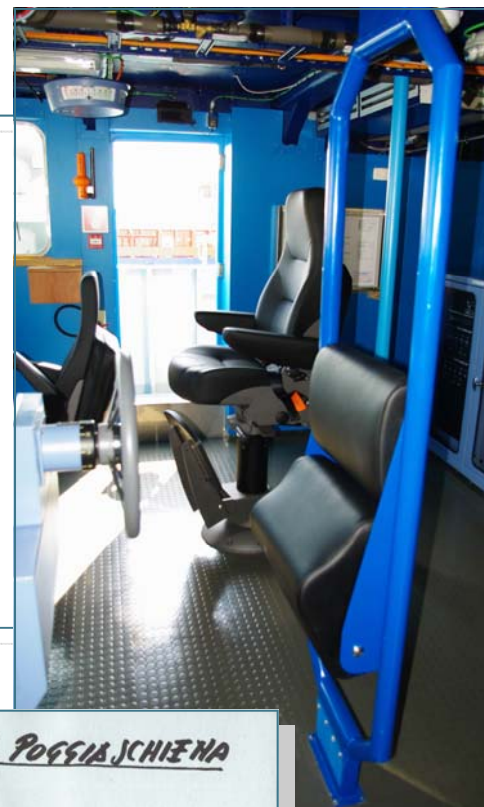
# HELMSMAN SEAT

MADE OF LIGHT ALLOY VARNISHED TUBE (DIAM.50 MM) AND ECO-LEATHER UPHOLSTER.

DIMENSIONS [MM] : L 650x H 1925x W 420

## MATERIALS

- STRUCTURE MADE OF ALUMINIUM TUBE DIAMETER 50 X 3 mm WIDTH
- SEATBACK MADE OF ALUMINIUM PLATE W.5 mm (COLOUR TO BE DEFINED)
- SEAT FRAME MADE OF "T" PROFILE ALUMINIUM BAR 40x40x5 mm
- SEAT UPHOLSTERED BY ECO-LEATHER
- VARNISH COLOUR RAL TO BE DEFINED



Sketch for sale purpose only.

THE PICTURES ARE FOR SALE PURPOSE ONLY. THE COMPANY IS ALLOWED TO CHANGE THE PRODUCT FEATURES WITHOUT ANY COMMUNICATION.



# PILOT HOUSE OUTFITTING



Certificato N° 8405/03/5

## SAMPLE OF COMPLETE OUTFITTING OF A SHIP AREA:

- COMPLETE COVERING OF WALLS BY MEANS OF PVC PRE-COATED STEEL FOILS
- MARINE WOOD SHELF COVERED BY MEANS OF PLASTIC HIGH PRESSURE LAMINATES
- BINOCULARS CASE
- TELESCOPE CASE



- HELMSMAN SEAT
- RIFLES AND HANDGUNS CASE
- DARKEN CURTAINS
- LIGHTS CASE
- FLAGS PIGEONHOLE
- PENSILE BOOKCASE
- OFFICIAL SEAT



**Alcinav S.p.A.**

Via della Repubblica, 45/A - 54011 - Albiano Magra - Aulla (MS) - Tel.: +39 0187 415455 - FAX: +39 0187 415750  
www.alcinav.it - info@alcinav.it  
P.IVA 01207360452 - R.E.A. 121784 - C.S.: 500.000,00 i.v.





# CAPTAIN CABIN



Certificato N° 8405/03/5

## SAMPLE OF COMPLETE OUTFITTING OF A SHIP AREA:

- COMPLETE COVERING OF WALLS BY MEANS OF PVC PRE-COATED STEEL FOILS
- FALSE CEILING MADE BY STAVES
- SUPPLY OF COMPLETE FURNITURE. FURNITURE IS MADE LIGHT ALLOY COATED BY MEANS OF PLASTIC HIGH PRESSURE LAMINATES
- COUCH WITH PULLMAN BED AND CHAIRS UPHOLSTERED BY ECO-LEATHER



THE PICTURES ARE FOR SALE PURPOSE ONLY. THE COMPANY IS ALLOWED TO CHANGE THE PRODUCT FEATURES WITHOUT ANY COMMUNICATION.