

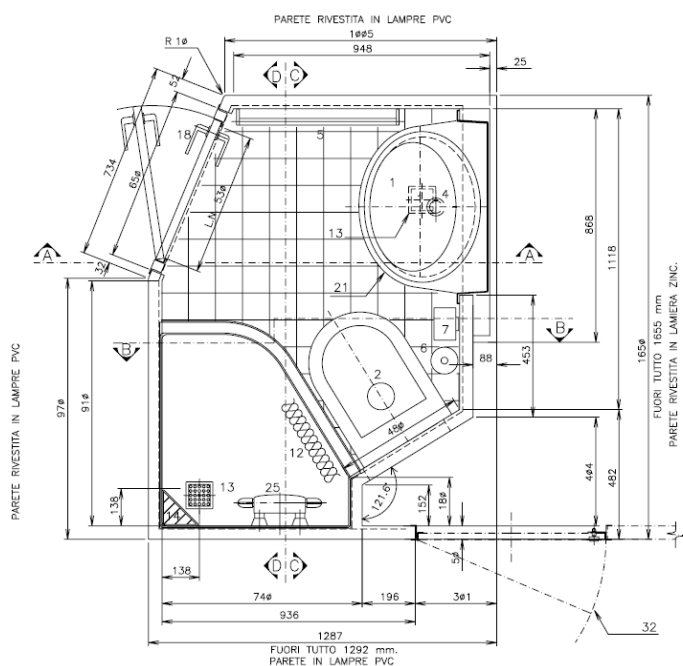


Certificato N° 8405/03/5

WET UNIT "LIVORNO"

EXTERNAL DIMENSIONS : 1650x1287MM

AVAILABLE IN PREFABRICATED REALIZATION OR IN ASSEMBLY KIT (FOR REFITTING)



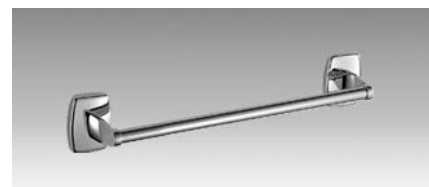
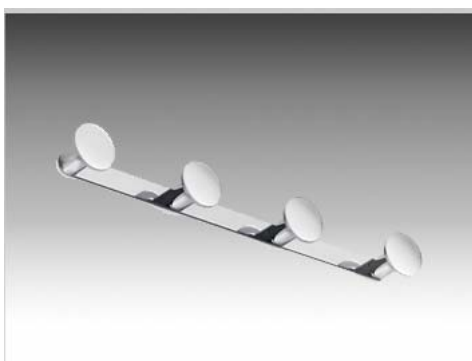
MATERIAL & ACCESSORIES

- Wall by sandwich panels double side (cabin—corridor) PVC film coated (color to be defined).
- Basement in galvanized steel 2 or 3 mm thickness.
- Flooring by 100x100 mm tiles (antislip)
- Drain by Polypropilene dia. 50/32 mm complete with nr 2 inox catch basin
- Mineral rockwool oriented fiber 150 kg/mc density.
- Door finiture PVC (color to be defined) with stainless steel frame, lock R&C complete with opening limiter.
- Electrical switch B-Ticino 5011 Bipolar MAGIC series
- Washbasin VTR module (see technical chart attached)
- Shower Tray in VTR RINA rated class
- Shower mixer Paffoni EQS168CR
- Shower head Grohe Tempesta art. 28591
- Shower curtain in Nylon complete with aluminium rail
- Connection Zucchetti Z9380P — 1/2"
- Vacuum bracker valve 1/2"
- Power socket complete with transformer 220/110 V
- Air extractor TROX (Client supply)
- Nr. 2 Towel holder 600/400 mm INDA 2200
- Wall mounted toilet brush INDA 3814
- Toilet paper holder INDA 2226
- Toilet paper holder spare INDA 2228
- Nr. 2 Safety grab bar INDA 590/M
- Nr. 2 Clothes hanger INDA 1225/4/CM
- Soap dish INDA 04490
- H2O system (hot & cold) made by copper insulated with Armaflex
- Electrical system complete with final point in junction box on inspection area



Certificato N° 8405/03/5

ACCESSORIES & COMPONENTS



THE PICTURES ARE FOR SALE PURPOSE ONLY. THE COMPANY IS ALLOWED TO CHANGE THE PRODUCT FEATURES WITHOUT ANY COMMUNICATION.

Alcinav S.p.A.

Via della Repubblica, 45/A - 54011 - Albiano Magra - Aulla (MS) - Tel.: +39 0187 415455 - FAX: +39 0187 415750

www.alcinav.it - info@alcinav.it

P.IVA 01207360452 - R.E.A. 121784 - C.S.: 500.000,00 i.v.